



Christian Ouellet, Real Estate Broker
Gauvin immobilier
 Real Estate Agency
 161, 105, Route #CP 164
 La Pêche (QC) J0X 3G0

819-360-4068 / 819-459-2419
 chris@gatineauhills.com
 http://www.gatineauhills.com



\$15,900

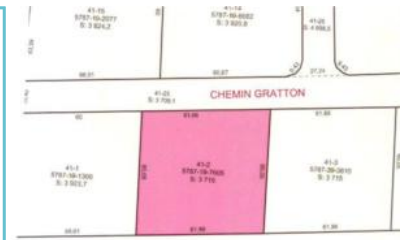
Rue Gratton, Lac-Sainte-Marie, J0X 1Z0

MLS® No. 8372370 (Active)

Seller's Declaration

No

Property Type	Lot	Possession	30 days PP/PR Accepted
Zoning	Residential	Deed of Sale Signature	30 days PP/PR Accepted
Lot Size	61.8 X m irr	Lot Eval.	\$4,800 (2010)
Lot Area	3,715.00 sqm	Building Eval.	
Cert. of Location	No	Mun. Taxes	\$87 (2010)
Body of Water		School Taxes	\$12 (2010)
		Additional Rev.	No



Centris®

Inclusions

Exclusions

Sewage System	None
Water Supply	None
Lot	Wooded
Distinctive Features	
Water (access)	Access, Navigable
View	
Proximity	Alpine skiing, Golf
Environmental Study	



Centris®



Centris®

Wooded lot with access on Tucker lake, nice potential mountain views and only 10 minutes to Mont Ste Marie downhill ski center and golf course.

Source: Gauvin immobilier, Real Estate Agency

Prepared by Christian Ouellet, Real Estate Broker on 2010-06-23 at 5:51 pm